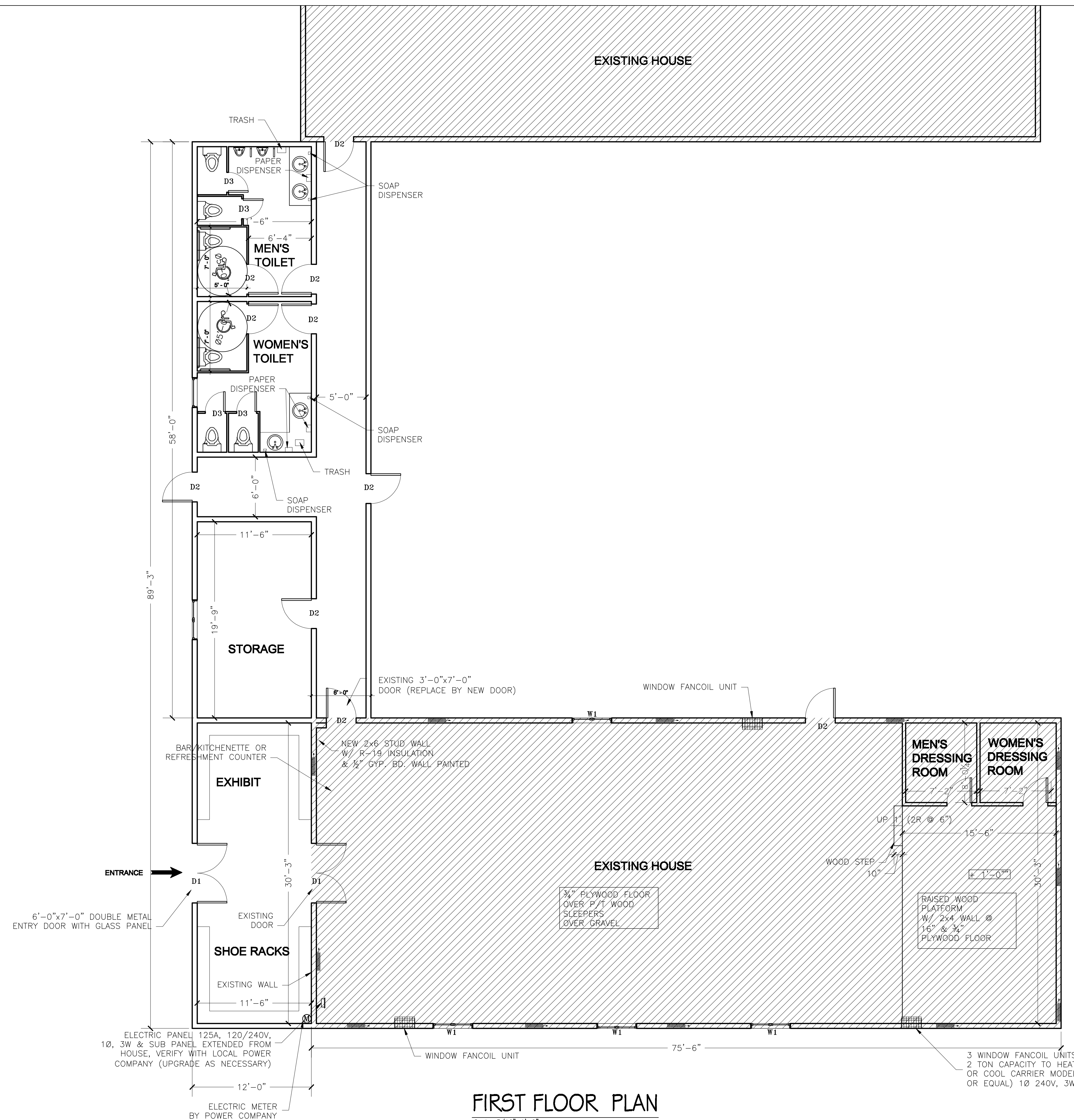


# HOUSE ADDITION

20520 BEAKSVUKKE RIAD  
MONTGOMERY COUNTY, MARYLAND 20839

I hereby certify that these documents were prepared or approved by me, and that I am a duly licensed professional engineer under the laws of the State of Maryland, License No. 8632, Expiration Date: 06.30.2016

## A.101



### FIRST FLOOR PLAN

Scale: 3/16"=1'-0"